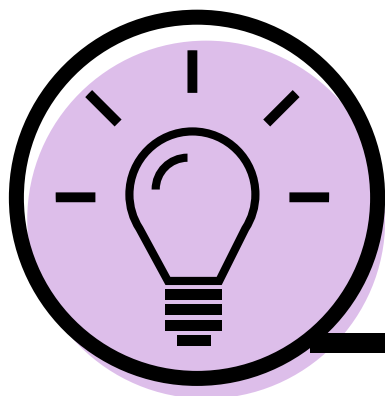


Hints and Tips

Create strong passwords

- Avoid using predictable passwords
- Combine three random words to create a single password

Avoid using the same password multiple times



Think before clicking on a link

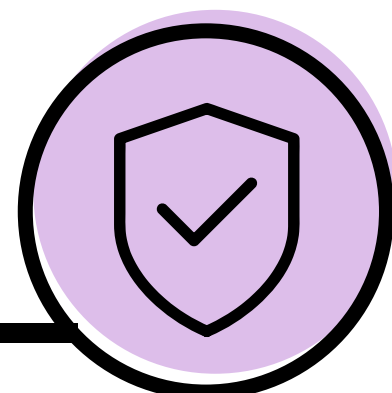
- Slow down and evaluate emails carefully
- Never click on links/attachments from an unknown source

Malicious links can come from friends who have been infected too

Safety and security

- Set up a two-factor authentication (2FA)
- Use anti-virus software from trusted vendors
- Review privacy settings on social media accounts

Set up multi-factor authentication for important websites



Smart devices

- Install software updates to keep your devices secure
- Install apps from trusted sources only

Don't use public Wi-Fi without a Virtual Private Network (VPN)

For more information contact:

 0116 295 3500

 www.leics-his.nhs.uk

 lpt.lhis.info@nhs.net

 @LeicsHis